



OREGON  
SCIENTIFIC

OREGON SCIENTIFIC...IN ALL OF US





Weather Stations  
Thermometers  
Hygrometers  
Radio Controlled Clocks  
Radio Controlled Projection Clocks  
Radio Controlled Travel Clocks  
Radio Controlled Wall Clocks

# WEATHER & TIME COLLECTION





## THE RADIO CONTROLLED SIGNAL

> Oregon Scientific radio-controlled clocks are fitted with a receiver for a precise radio signal of time to within a second.

Our clocks automatically synchronise time and date when they are brought within range of the radio signal MSF60 generated from Rugby, England (for UK models) or DCF77 generated from Frankfurt, Germany for Central Europe (for European models). These radio signals have a range radius of 1500km and are driven by a Cesium based atomic clock that varies less than one millionth of a second per year.

So as well as being accurate beyond your wildest dreams, Oregon Scientific clocks automatically self adjust at the start/end of British Summer.





## BHT 668

### LINEAR TIME & WEATHER SET

- > A series of stylishly designed measuring instruments available to purchase individually to make one complete state-of-the-art weather monitoring system
- > Radio controlled clock and calendar with crescendo alarm
- > Barometer with east-to-read weather forecasting symbols
- > Thermometer hygrometer measures indoor/outdoor temperature and humidity from up to 3 remote sensors (1 included).
- > Wireless rain gauge displays daily & historical rainfall measurements for the past 9 days







## BHM 612

- > Radio controlled clock and calendar
- > Crescendo alarm
- > Up to 5 display languages



BHM 612

## BHGR 618

- > Measures indoor/outdoor temperature and humidity
- > Takes up to 3 remote thermo/hygro sensors (1 BHGR228 included)
- > Comfort level indicator



BHGR 618

The equipment consists of the main unit and a sensor.

## BHB 613

- > Barometer with easy to read weather forecasting symbols
- > Current barometric pressure reading (hPa) and history bar graph



BHB 613



The equipment consists of the main unit and a sensor.



BHR 616

## BHR 616

- > Rain gauge with cable free rain collector
- > Displays daily & historical rainfall measurements for the past 9 days
- > Accumulated rainfall reading since last reset with date stamp
- > Clock and calendar





## AWS 888 METEO VISION FULL COLOUR WEATHER STATION

- > Cable Free Weather Station with 3.8" color-STN LCD display
- > Indoor and 5-channel outdoor temperature and humidity
- > Animated weather forecast displayed by photo-images or animations accompanied with sound effects.
- > Choice of two display modes: Still or Auto-Rotation
- > Barometric Pressure measurement with bar-chart display of history for the last 24 hours
- > Max/Min temperature and humidity memories
- > Temperature and Humidity Trend indicator
- > Radio-controlled Clock and Calendar
- > 2nd time-zone hour-offset (+/- 23 hours)
- > Day-of-week and month in 5 languages
- > Two independent 2-minute crescendo alarms with 8-minute snooze



The equipment consists of the main unit and a thermo-hygro sensor.







## BAR 998 HG METEO DIALOGUE VOICE ACTIVATED WEATHER STATION

- > Fully functional long-range wireless Weather Station
- > Voice activation for time and weather information
- > Indoor and 5-channel outdoor Temperature & Humidity
- > Weather Forecast with animated easy-to-read weather forecasting symbols
- > Barometric Pressure measurement with bar-chart display of history for the last 24 hours
- > Max/Min memories for Temperature & Humidity readings
- > Temperature and Humidity trend indicator
- > Heat Index
- > Radio-controlled Clock and Calendar
- > Frost Pre-Alarm for Channel-1 remote sensor
- > Day-of-week and voice activation in 5 languages
- > 2-minute daily crescendo alarm with 8-minute snooze
- > HiGlo Backlight
- > Wall mount or table stand design

### Optional UV measurementsensor sensor:

- > Bar-chart and numerical display of UVI history for the last 10 hours
- > Calculates your individual sun exposure time based on user input skin type and SPF levels
- > Audible alarm alerts you when UV reaches Danger Level

### Remote unit with RF Clock - RTGR328N

- > Splash-proof design with LCD display indicating time, temperature and humidity
- > Remote Temperature Measuring Range: -20.0°C to +60.0°C [-4.0°F to +140.0°F]
- > RF Transmission Frequency: 433 MHz
- > RF Transmission Range: 100 meters at sight



The packaging includes the main unit, a thermo-hygro sensor and optional UV sensor





## BAR 321 HG METEO VOICE TALKING WEATHER STATION WITH UV MEASUREMENT

- > Wireless Weather Station with talking/broadcast function for time and weather information
- > Indoor and 5-channel outdoor Temperature & Humidity
- > Weather Forecast with animated easy-to-read weather symbols
- > Barometric Pressure measurement with bar-chart display of history for the last 24 hours
- > Max/Min memories for temperature & humidity readings
- > Temperature & Humidity trend indicator
- > Comfort level indicator
- > Radio controlled Clock and calendar
- > 2nd time-zone hour-offset (+/- 23 hours)
- > Day-of-week and talking function in 5 languages
- > 2-minute daily crescendo alarm
- > Frost Pre-Alarm for Channel-1 remote sensor
- > Choice of either a Talking or Beep alarm with 8-minute snooze
- > HiGlo Backlight
- > Wall mount or table stand design

### Includes UV measurement sensor:

- > Bar-chart and numerical display of UVI history for the last 10 hours
- > Calculates your individual sun exposure time based on user input skin type and SPF levels
- > Audible alarm alerts you when UV reaches Danger Level

### Remote unit with RF Clock RTGR328N

- > Splash-proof design with LCD display indicating time, temperature and humidity
- > Remote Temperature Measuring Range: -20.0°C to +60.0°C [-4.0°F to +140.0°F]
- > RF Transmission Frequency: 433 MHz
- > RF Transmission Range: 100 meters at sight



The packaging includes the main unit, a thermo-hygro sensor and optional UV sensor

## BAA 938HG/938HGS

- > Barometer with animated easy to read weather forecasting symbols
- > Current barometric pressure reading (hPa) and history bar graph
- > Measures indoor/outdoor temperature and humidity
- > Takes up to 3 remote sensors (1 included)
- > Temperature & humidity trend indicators
- > Comfort level indicators
- > Animated moonphase and seasonal tide display
- > Min/max temperature and humidity memory
- > Clock with alarm and calendar
- > Frost alarm
- > HiGlo backlight



The equipment consists of the main unit and a sensor.



# BAA 928

- > Barometer with easy-to-read weather forecasting symbols
- > Current barometric pressure reading (hPa) and history bar graph
- > Measures indoor/outdoor temperature and humidity
- > Takes 1 remote sensor
- > Temperature & humidity trend indicators
- > Comfort level indicators
- > Moonphase and seasonal tide display
- > Min/Max temperature and humidity memory
- > Clock with alarm and calendar
- > Frost Pre-Alarm
- > HiGlo backlight

Not available in the UK - replacement model is the BAA 938HG/HGS



The equipment consists of the main unit and a sensor.





# BAA 898 HG

- > Barometer with easy-to-read weather forecasting symbols
- > Current barometric pressure reading (hPa)
- > Measures indoor/outdoor temperature and humidity
- > Takes up to 3 remote sensors (1 included)
- > Temperature, pressure & humidity trend indicators
- > Comfort level indicators
- > Min/Max temperature and humidity memory
- > Clock with calendar & alarm with snooze
- > Frost Pre-Alarm
- > Backlight



The equipment consists of the main unit and a sensor.



The equipment consists of the main unit and a sensor.



# BAA 913 HG

- > Barometer with easy-to-read weather forecasting symbols
- > Current barometric pressure reading (hPa)
- > Measures indoor/outdoor temperature and humidity
- > Takes up to 3 remote sensors (1 included)
- > Temperature, pressure & humidity trend indicators
- > Comfort level indicators
- > Min/Max temperature and humidity memory
- > Clock with alarm and calendar
- > Frost Pre-Alarm
- > HiGlo backlight

A Frost Pre-Alarm will wake you up ahead of your normal alarm if Frost has been detected - scrape that ice from your windscreen, wrap up warmly - be prepared!



# BAR 122 HGN

- > Barometer with weather forecast for next 12/24 hours
- > Indoor/outdoor thermometer & hygrometer
- > Min/Max recorded temperature & humidity
- > Monitors temperature in up to 3 different locations using optional Cable-Free sensors (1 included)
- > Trend indicator for barometric pressure, temperature and humidity
- > Comfort level indicator: comfort, wet and dry
- > Radio controlled clock & calendar
- > Clock with dual alarm & snooze
- > Hi/Lo alarm for temperature and relative humidity (channel 1 only)
- > Not available in the UK



The equipment consists of the main unit and a sensor.

# BAR 888 U

- > Barometer with easy-to-read weather forecasting symbols
- > Measures indoor/outdoor temperature
- > Takes up to 3 remote sensors (1 included)
- > Trend indicators
- > Min/max temperature memory
- > Radio controlled Clock with two independent alarms and Calendar



The equipment consists of the main unit and a sensor.



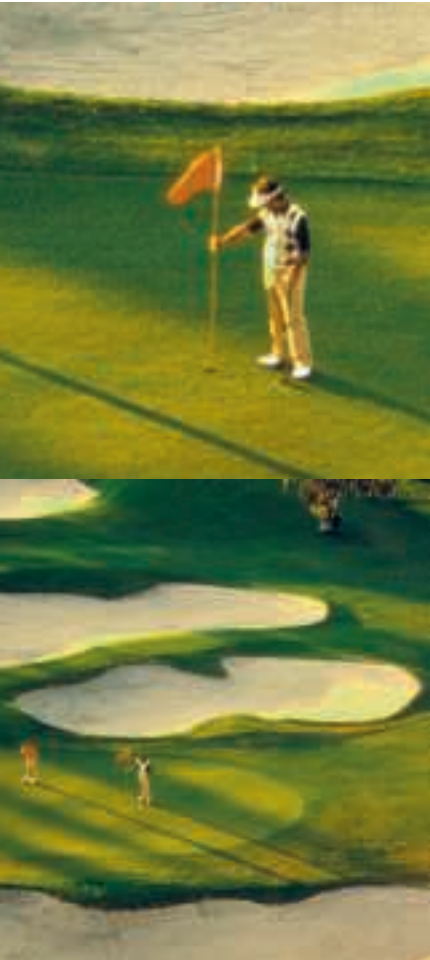
# BA 812 E

- > Barometer with easy to read weather forecasting symbols
- > Measures indoor/outdoor temperature
- > Min/max temperature memory
- > Clock with alarm and calendar
- > HiGlo backlight
- > Not available in the UK



# BA 113

- > Barometer with easy to read weather forecasting symbols
- > Humidity reading with comfort indicator
- > Min/max temperature memory
- > Clock with alarm & calendar
- > Not available in the UK



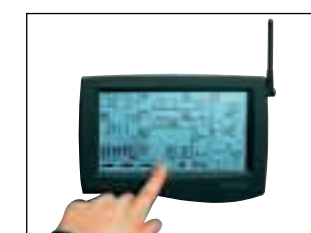




## WMR 928N

- > Digital touch screen weather station
- > PC linkable
- > Includes wind meter, reading speed and direction
- > Also includes remote rain collector
- > Barometer with easy-to-read forecasting symbols
- > Current barometric pressure reading (hPa) and history bar graph
- > Hi/Lo temperature and humidity alarms
- > Measures indoor/outdoor temperature and humidity
- > Takes up to 3 remote thermo/hygro sensors (1 included)
- > Min/Max temperature and humidity memory
- > Radio controlled Clock with alarm and calendar
- > HiGlo backlight

The equipment consists of the main unit and sensor pack (as shown on page 30).







## WMR 112

- > Digital touch screen weather station
- > Includes wind meter, reading speed and direction
- > Also includes remote rain collector
- > Barometer with easy-to-read forecasting symbols
- > Current barometric pressure reading (hPa) and history bar graph
- > Hi/Lo temperature and humidity alarms
- > Measures indoor/outdoor temperature and humidity
- > Takes up to 3 remote thermo/hygro sensors (1 included)
- > Min/max temperature and humidity memory
- > Radio controlled clock with alarm and calendar



The equipment consists of the main unit and sensor pack (WGR918, THGR918 without solar panels, RGR918, BTHR 918)



**WMR 918** ACCESSORIES

- > Gauge & sensor pack for WMR928
- > Not available separately in UK



**RGR 918** RAIN GAUGE

- > Measures accumulated and daily rainfall
- > Dimensions: 145 mm (h) x 140 (Ø)
- > Weight: 280 g (including cable)
- > Solar and battery powered



**BTHR 918** BAROMETER

- > Weather forecast represented by symbols
- > Displays pressure reading: 795 to 1050 hPa
- > Temperature
- > Relative humidity
- > Measures 69 mm x 106 mm x 18 mm
- > Weight: 134 g



**WGR 918** WIND METER

- > Measures wind speed and direction
- > Size: 420 mm
- > Weight: 310 g (including cable)
- > Solar and battery powered



**THR 228N/238N** THERMOMETER

- > Displays current temperature in °C or °F
- > Temperature range -50°C to +70°C
- > Min/max memory & alarm



**THGR 918** THERMOMETER  
HYGROMETER

- > Displays outdoor temperature and relative humidity
- > Weight: 134 g (including cable)
- > Solar and battery powered



**THGR 228N/238N** HYGROMETER

- > Displays current temperature
- > Relative humidity
- > Minimum & maximum memory and alarm for temperature and humidity





**DL 918 DATA LOGGER**

- > Compatible with WMR 918 / 928
- > Stores all weather data collected from the remote sensors
- > Stored weather data can be downloaded to PC through RS232 port or IRDA
- > Radio Controlled clock for precise time stamping
- > LCD display shows status of each sensor
- > User can determine which sensor can be logged by PC link program
- > Low battery indicator
- > Hi/Glo backlight



**RT 918 REPEATER**

- > Compatible with WMR928
- > Interconnecting device, which receives signals from the remote sensors and relays information to the main unit
- > Improves reception power and extends reception distance between sensors and main unit up to 100m
- > Weatherproof design
- > Not available in the UK





ELIMINATA GENERALE

VIVE DIVULGATIVO





## RMR 183

- > Measures indoor/outdoor temperature
- > Takes up to 3 remote sensors (1 included)
- > Temperature trend indicator
- > Min/max temperature memory
- > Radio controlled clock with alarm and calendar



The equipment consists of the main unit and a sensor.





## RMR 132 HG

- > Thermometer with radio controlled clock
- > Comfort level indicators - wet, comfortable, or dry
- > Monitors temperature and humidity in up to 3 different locations with wireless sensors
- > Radio-controlled clock with Calendar
- > 2 independent alarms with 2 minute crescendo alarm
- > Displays day of the week in choice of 4 languages
- > 2 time zones
- > Not available in the UK



The equipment consists of the main unit and a sensor.

## RMR 182

- > Thermometer with internal and external temperature display via Cable-Free remote sensors
- > Minimum and maximum temperature
- > Monitors temperature in up to 3 different remote locations via optional Cable-Free sensors (sold separately)
- > Radio-controlled clock & calendar
- > Crescendo alarm
- > Not available in the UK



The equipment consists of the main unit and a sensor.

## JTR 168 LR

- > Thermometer monitors the temperature in up to three different locations using wireless sensors
- > Graph displays the change of temperature over the last 12 hours for sensor 1
- > Indoor temperature
- > Frost warning
- > Maximum and minimum temperature memory
- > Power source: 2 x (1.5v) "AA" batteries
- > THR168 sensor included Wireless sensor displays temperature on LCD
- > Maximum transmission range is up to 100 metres
- > Not available in the UK



The equipment consists of the main unit and a sensor.





EMR 812 HGN

- > Displays indoor temperature and temperatures from up to three different environments
- > Main temperature unit displays the indoor humidity and the humidity reading from the remote sensors
- > Memory for maximum & minimum temperature and humidity readings
- > Humidity alarm
- > Arrow trend indicator displays both temperature and humidity
- > Maximum transmission distance of up to 30 m
- > Wall mounted
- > Not available in the UK



The equipment consists of the main unit and a sensor.

MTR 102

- > Measures indoor/outdoor temperature
- > Takes up to 3 remote sensors (1 included)
- > Min/max temperature memory
- > Frost alarm for Channel-1 remote sensor



The equipment consists of the main unit and a sensor.

EMR 899

- > Measures indoor/outdoor temperature
- > Takes up to 3 remote sensors (1 included)
- > Temperature trend indicator
- > Min/max temperature memory and alarm



The equipment consists of the main unit and a sensor.



JB 880 EX

- > Indoor/outdoor thermometer
- > Minimum and maximum temperature memory
- > Free-standing or wall mounted
- > Not available in the UK

NAW 888 T

- > Digital thermometer with clock
- > Toggles between clock and thermometer display
- > Compact design
- > Table or wall mount
- > Not available in the UK







## AR 112N

### AIR QUALITY MONITOR

- > Monitors indoor air quality subject to the concentration of VOC (Volatile Organic Compounds) gases
- > Facility to manually regulate the level of sensitivity of the instrument
- > Audible alarm for poor air quality
- > Displays indoor temperature and relative humidity
- > Minimum and maximum memory for temperature and humidity
- > Not available in the UK









## RRM 968 P

- > AM/FM radio with 16 station presets, digital volume & auto scan tuning
- > Radio controlled clock & calendar
- > Adjustable arm projects the time and indoor temperature onto the ceiling at night at the touch of a button
- > Continuous projection function with mains adaptor (included)
- > Manual projection image focus and rotation
- > Crescendo alarm with snooze & wake up to radio function
- > Up to 5 display languages
- > HiGlo backlight



Projection of time and indoor temperature or alarm status



## RMR 966 P

- > Rotatable night light switches on/off automatically (light sensitive)
- > Remote temperature display using cable-free sensor (included)
- > Frost Pre-Alarm
- > Second time zone for use abroad
- > Image reversing switch for 180° image flip (if upside down)
- > Image rotation drum for orientation of projected image (continuously from 0° to 180°)
- > Image focus knob for manual focusing of projected image
- > Tilttable projection head for positioning the projected image vertically (upward or downward)
- > Adjustable arm projects the time and indoor/outdoor temperature onto the ceiling at night at the touch of a button
- > Continuous projection function with mains adaptor (included)
- > Radio controlled clock & calendar
- > Crescendo alarm with snooze
- > Up to 5 display languages
- > HiGlo backlight



The RMR 966P includes one cable-free sensor for remote temperature monitoring





## RM 988 P

- > Radio controlled projection alarm
- > Clock with Indoor temperature display
- > Max/Min Indoor Temperature memories
- > Calendar with month and day, day-of-week settable in 5 languages
- > Daily 1-minute crescendo alarm
- > 8-minute snooze function
- > Single line projection of time
- > 180° image rotation for orientation of projected image of time
- > Manual projection image focus
- > Tilttable projection head for vertically positioning the projected image of time (upward or downward)
- > Continuous projection with mains adapter (included))
- > Blue colour LCD display
- > HiGlo backlight



Projection of time





## RM 329 PSE

- > 180° adjustable projection arm projects the time onto the ceiling or wall at night at the touch of a button
- > Image reversing switch for 180° image reverse (upside down)
- > Image rotation drum for orientation of projected image (continuously from 0° to 180°)
- > Image focus knob for manual focusing of projected image
- > Tilttable projection head for positioning the projected image vertically (upward or downward)
- > Continuous projection function with mains adaptor (included)
- > Radio controlled clock & calendar
- > Alarm with snooze
- > HiGlo backlight



## BAR 338 P

- > Barometer predicts the weather for the next 12-24 hours using easy to read symbols
- > Remote temperature display using cable-free sensor (included)
- > Radio controlled clock & calendar
- > 180° adjustable projection arm projects the time and outdoor temperature onto the ceiling or wall at night at the touch of a button
- > Image reversing switch for 180° image flip (if upside down)
- > Image rotation drum for orientation of projected image (continuously from 0° to 180°)
- > Image focus knob for manual focusing of projected image
- > Tilttable projection head for positioning the projected image vertically (upward or downward)
- > Continuous projection function with mains adaptor (included)
- > Crescendo alarm with snooze
- > Up to 5 display languages
- > HiGlo backlight

## BAR 318 PSE SHINE

- > Adjustable arm projects the time onto the ceiling at night at the touch of a button
- > Manual projection image focus
- > Continuous projection function with mains adaptor (included)
- > Second time zone
- > Radio controlled clock & calendar
- > Up to 4 display languages
- > 2 separate alarms with snooze
- > Backlight



The BAR338P includes one cable-free sensor for remote temperature monitoring



## RM 318 P

- > Adjustable arm projects the time onto the ceiling at night at the touch of a button
- > Manual projection image focus
- > Continuous projection function with mains adaptor (included)
- > Second time zone
- > Radio controlled clock & calendar
- > Up to 4 display languages
- > 2 separate alarms with snooze
- > Backlight



## RM 868 P

- > Time displayed in analogue & digital format
- > 180° adjustable projection arm projects the time onto the ceiling or wall at night at the touch of a button
- > Image reversing switch for 180° image flip (if upside down)
- > Image rotation drum for orientation of projected image (continuously from 0° to 180°)
- > Image focus knob for manual focusing of projected image
- > Tilttable projection head for positioning the projected image vertically (upward or downward)
- > Continuous projection function with mains adaptor (included)
- > Radio controlled clock & calendar
- > Crescendo alarm with snooze
- > HiGlo backlight







## RM 816P

- > Radio Controlled Alarm Clock with 90° swivel projection
- > Calendar with month and day, day-of week selectable in 5 languages
- > Second time-zone with hour offset: +/- 9 hours for travel abroad
- > Two independent 2-minute crescendo alarms
- > 8 minute snooze
- > Projects an image of time onto the wall or ceiling of a darkened room
- > Tilttable projection head for vertically positioning the projected image of time (upward or downward)
- > Red projection light
- > Continuous projection with mains adapter (included)
- > Reflective colour LCD display showing time & date
- > Reverse LCD technology
- > HiGlo. backlight
- > Available in a choice of four colours:
 

Sky Blue	(RM816PUL)
Navy Blue	(RM816PB)
Red	RM816PR)
Silver	(RM816PS)





**RM 313 P SILVER**

- > Projects the time onto the ceiling at night at the touch of a button
- > Continuous projection function with mains adaptor (included)
- > Radio controlled clock & calendar
- > Crescendo alarm with snooze
- > HiGlo backlight



**RM 313 P ICE CUBE**

- > Projects the time onto the ceiling at night at the touch of a button
- > Continuous projection function with mains adaptor (included)
- > Radio controlled clock & calendar
- > Crescendo alarm with snooze
- > HiGlo backlight



**RM 813 P KAMILLA**

- > Glowing tail acts as a comforting night light
- > Projects the time onto the ceiling at night at the touch of a button
- > Continuous projection/nightlight function with mains adaptor (included)
- > Radio controlled clock & calendar
- > Crescendo alarm with snooze
- > HiGlo backlight

Not available in the UK



**RM 313 P BLUE**

- > Projects the time onto the ceiling at night at the touch of a button
- > Continuous projection function with mains adaptor (included)
- > Radio controlled clock & calendar
- > Crescendo alarm with snooze
- > HiGlo backlight

Not available in the UK

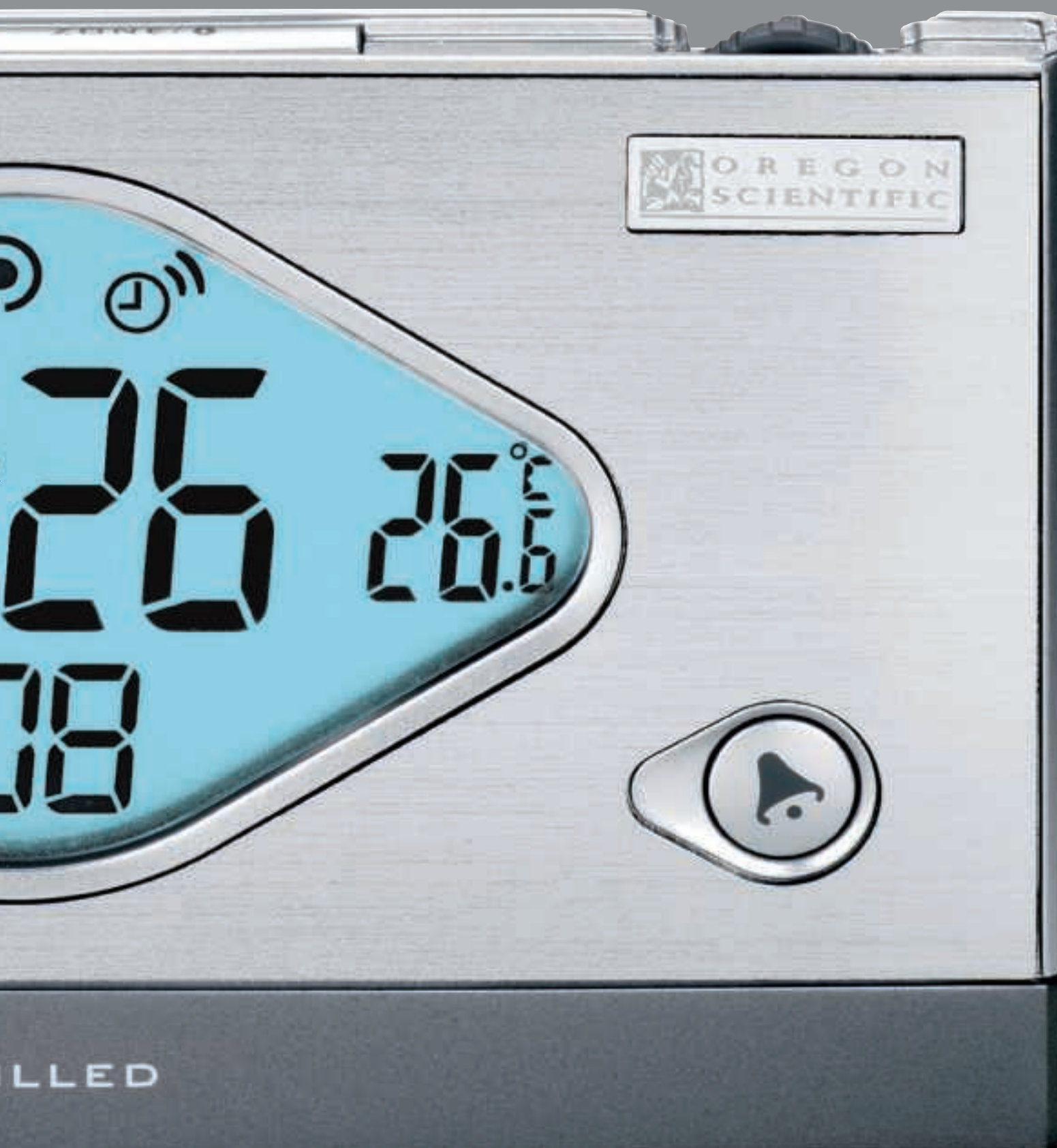
**RM 313 P YELLOW**

- > Projects the time onto the ceiling at night at the touch of a button
- > Manual projection image focus
- > Continuous projection function with mains adaptor (included)
- > Radio controlled clock & calendar
- > Crescendo alarm with snooze
- > HiGlo backlight
- > Not available in the UK

Not available in the UK







## RM 928

- > Slim pocket size Radio controlled Travel Alarm Clock
- > Dual band functionality (radio-control element will work in the UK as well as Europe)
- > Calendar with day-of-week in 5 selectable languages
- > Two separate 2-minute crescendo alarms
- > User-selectable Hourly-Chime function
- > Displays local temperature via built-in thermometer
- > HiGlo backlight
- > Key lock function for use when travelling
- > Travel pouch and table stand included





RM 932

- > Displays the corresponding time in one of 130 cities around the world
- > Hourly chime
- > Key lock
- > Radio controlled clock & calendar
- > Second time zone
- > Up to 4 display languages
- > 2 separate crescendo alarms with snooze
- > HiGlo backlight
- > Includes travel pouch



RMB 383

- > A true World radio-controlled travel alarm clock & calendar
- > Includes 3 user interchangeable antennas which will receive the correct time signals for UK, Continental Europe, USA & Japan
- > User selectable hourly chime function
- > Key lock function for when travelling
- > Local temperature display via built-in thermometer
- > Second time zone
- > Up to 5 display languages
- > Two separate crescendo alarms with snooze
- > HiGlo backlight
- > Includes travel pouch for clock and antennas



RM 962

- > Radio controlled clock & calendar with local temperature display
- > Crescendo alarm with snooze
- > HiGlo backlight





RM 912 EL/ELP

- > Radio controlled clock & calendar with second time zone
- > Up to 4 display languages
- > 2 separate alarms with snooze
- > Backlight
- > Not available in the UK



AS 313/316

- > Foldaway travel case/stand
- > Clock & alarm with snooze
- > HiGlo backlight
- > AS313 is not available in the UK



AS 688 NE

- > Night finder function for easy viewing in the dark
- > Fold away travel case/stand
- > Clock & alarm with snooze
- > HiGlo backlight



RM 913 TCN

- > Radio controlled clock & calendar with second time zone
- > Up to 4 display languages
- > 2 separate alarms with snooze
- > Backlight



Available only in silver in the UK

TR 118

- > 6 digit LCD
- > Clock
- > 2 separate timers
- > Countdown/up to 99 h, 59 min, 59 sec.
- > Alarm
- > Not available in the UK







Projection of time and alarm status

## RM 888 P

- > Time displayed in analogue & digital format
- > Projects the time onto the ceiling at night at the touch of a button
- > Manual projection image focus
- > Continuous projection function with mains adaptor (sold separately)
- > Radio controlled clock & calendar
- > Crescendo alarm with snooze
- > HiGlo backlight
- > Includes travel pouch



## RM 823

- > Radio controlled clock & calendar
- > 2 crescendo alarms with snooze
- > Up to 4 display languages
- > Key lock
- > Reverse HiGlo backlight
- > Includes travel pouch

## RM 602 BYO

- > Bio-rhythm radio controlled clock
- > 2 section LCD display with back-light
- > Calendar display in choice of 4 languages
- > 2 independent crescendo alarms with 8 minute snooze
- > User selects bio-rhythm chart indicating physical, psychic, intellectual & intuitive conditions
- > Bio rhythm trend indicators: Positive up, Positive down, Negative up, Negative down
- > UK Format 12 hour clock
- > Low battery power indicator
- > Not available in the UK



## RRM 113

- > AM/FM radio with 16 station presets & digital volume tuning
- > Radio controlled clock & calendar
- > Second time zone
- > 2 separate alarms with snooze & wake up to radio alarm option
- > Up to 5 display languages
- > HiGlo backlight
- > Includes mains adaptor





## JM 889

- > Contemporary Radio controlled wall clock for the home or office
- > Large LCD display for easy & clear distance viewing
- > Displays indoor temperature via built-in thermometer
- > Calendar with day-of-the-week in 4 selectable languages
- > 1 minute wake up alarm with 8-minute snooze
- > Wall mount or table stand design
- > Available in Silver or Grey





## JMR 818 WF

- > Jumbo radio controlled wall clock with remote sensor
- > Weather forecast illustrated with symbols and pressure trend arrow
- > Inside temperature
- > Outside temperature data transmits from remote sensor to main unit
- > Crescendo alarm
- > Up to 4 display languages
- > Not available in the UK



## JM 818 CD MURALES

- > Jumbo radio controlled wall clock with countdown
- > Countdown can be programmed to any special date/event
- > Percentage graph displays countdown
- > 2 independent alarms
- > Not available in the UK



## JM 818 WF

- > Jumbo Wall clock with large LCD
- > Alarm
- > Calendar with day, month and day of the week
- > Weather forecast illustrated by symbols and pressure trend indicator
- > Inside temperature reading
- > Not available in the UK



The equipment consists of the main unit and a sensor

## JM 828 WFU

- > Jumbo wall clock
- > Barometer predicts the weather for the next 12-24 hours using easy to read symbols
- > Displays indoor temperature
- > Barometric pressure trend indicator
- > Radio controlled clock & calendar with alarm
- > Up to 5 display languages

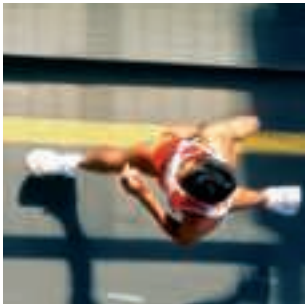


## JM 838 WF

- > Jumbo radio controlled wall clock
- > Weather forecast illustrated with symbols and pressure trend arrow
- > Indoor temperature
- > Crescendo alarm
- > Up to 4 display languages
- > Not available in the UK







Multifunctional Sport Watches  
Altimeters  
Sailing Timers  
Bike Computer Watches  
Heart Rate Monitor Watches  
Stopwatches

SPORT & LIFE COLLECTION





## RA 201 OUTBREAKER SAILOR

### Sailing watch with countdown timer

- > 10 or 6 minute countdown sailing timer / or user selectable
- > Barometric pressure with history chart
- > Sea level calibration
- > Easy-to-read weather forecasting icons
- > Thermometer with temperature measurement from -10°C to +60°C
- > Real-time altitude reading up to 9,000 m with user-set alarms
- > Stopwatch and count down timer with range of 99:59:59
- > 99 lap memory
- > Clock, calendar & alarm
- > HiGlo backlight
- > Key lock function
- > Water resistant up to 50 meters
- > Available in a choice of colours & strap options



RA 201 NB



RA 201 B



RA 201 R



RA 201 LR



RA 201 LB

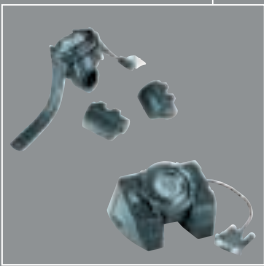


RP 109 OUTBREAKER BIKE



Multifunctional watch with Altimeter, Barometer, Heart rate monitor & Wireless bike computer

- > Bicycle computer with wireless transmitter for wheel speed and pedal cadence
- > PC linkage with docking station via RS232 interface
- > Heart rate monitor by wireless chest belt (splash proof)
- > Average, min/max heart rate records
- > Automatic or manual programmable hi/lo heart rate limits
- > Real time altitude reading up to 9,000 m with user-set alarms
- > Barometric pressure with history chart
- > Sea level calibration
- > Easy-to-read weather forecasting icons
- > Thermometer with temperature measurement from -10°C to +60°C
- > Stopwatch and count down timer with range of 99:59:59
- > 99 lap memory
- > Tour memory mode: record time of 659 minutes (11 hours) based on a 5 second sampling interval
- > Clock, calendar & alarm
- > HiGlo backlight
- > Key lock function
- > Bike mount kit included
- > User selectable measurement units
- > Water resistant up to 50 meters



RS 109 OUTBREAKER FITNESS

Multifunctional watch with Altimeter, Barometer & Heart rate monitor

- > Real time altitude reading up to 9,000 m with user-set alarms
- > Barometric pressure with history chart
- > Sea level calibration
- > Easy-to-read weather forecasting icons
- > Thermometer with temperature measurement from -10°C to +60°C
- > Heart Rate monitor via wireless chest belt (splash proof)
- > Average, min/max heart rate records
- > Automatic or manual programmable hi/lo heart rate limits
- > Stopwatch and count down timer with range of 99:59:59
- > 99 lap memory
- > Tour memory mode: record time of 508 minutes (8.5 hours) based on a 5 second sampling interval
- > Clock, calendar & alarm
- > HiGlo backlight
- > User selectable measurement units
- > Water resistant up to 50 meters



RA 109 OUTBREAKER MOUNTAIN

Multifunctional watch with Altimeter & Barometer

- > Real-time altitude reading up to 9,000 m with user-set alarms
- > Barometric pressure with history chart
- > Sea level calibration
- > Easy-to-read weather forecasting icons
- > Thermometer with temperature measurement from -10°C to +60°C
- > Stopwatch and count down timer with range of 99:59:59
- > Tour memory mode: record time of 598 minutes (10 hours) based on a 5 second sampling interval
- > Clock, calendar & alarm
- > HiGlo backlight
- > Key lock function
- > User selectable measurement units
- > Water resistant up to 50 meters



HOW DOES THE BIKE COMPUTER SYSTEM WORK?



Handle bar cradle (to fix the watch) receives the data from the 2 bike sensors



The speed sensor measures speed and calculates distance



The Cadence Sensor measure the power of your performance.\*

At the end of your bike ride, the docking station can be used to download data on to your PC for analysis.

The OUTBREAKER software allows you to:

1. Download all the information available from your wrist computer such as temperature, pressure, altitude, heart rate, bike speed, distance and cadence: dependent on the model wristwatch you have.
2. Read this information through clear tables and graphics.
3. Create and register your own performance database.
4. Be interactive with your wrist computer by setting additional features like alarms, pressure, forecast icons, pulse limits for training zone, bike wheel circumference, etc...



## TS 130 OUTBREAKER BIKE PRO



### Multifunction watch with Altimeter, Barometer, Bike computer & Heart rate monitor

- > Bicycle computer with wireless transmitter for wheel speed and pedal cadence
- > PC linkage with docking station via RS232 interface
- > Bike mount kit included
- > Real time altitude reading up to 9.000 m with user-set alarms
- > Barometric pressure with history chart
- > Easy-to-read weather forecasting icons
- > Thermometer with temperature measurement from -10°C to +60°C
- > Heart rate monitor via wireless chest belt (splash proof)
- > Stopwatch and count down timer with range of 99:59:59
- > 99 lap memory
- > Tour memory mode: record time of 659 minutes (11 hours) based on a 5 second sampling interval
- > Clock, calendar & alarm
- > HiGlo backlight
- > Key lock function
- > Water resistant up to 30 meters



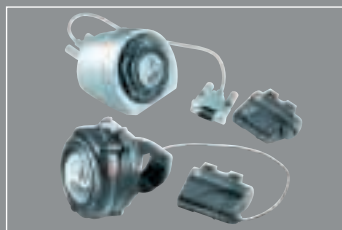




## TS 120 OUTBREAKER BIKE CARDIO

### Multifunctional watch with Bike computer & Heart rate monitor

- > Bicycle computer with wireless transmitter for wheel speed and cabled sensor for pedal cadence
- > PC linkage with docking station via RS232 interface
- > Bike mount kit included
- > Heart rate monitor via wireless chest belt (splash proof)
- > Average, min/max heart rate records
- > Automatic or manual programmable hi/lo heart rate limits
- > Stopwatch and count down timer with range of 99:59:59
- > 99 lap memory
- > Tour memory mode: record time of 480 minutes (8 hours) based on a 5 second sampling interval
- > Clock, calendar & alarm
- > HiGlo backlight
- > Key lock function
- > Water resistant up to 30 meters



## TS 110 OUTBREAKER BIKE ALTI

### Multifunctional watch with Altimeter, Barometer & Bike computer

- > Bicycle computer with wireless transmitter for wheel speed and cabled sensor for pedal cadence
- > PC linkage with docking station via RS232 interface
- > Bike mount kit included
- > Real-time altitude reading up to 9,000 m with user-set alarms
- > Barometric pressure with history chart
- > Sea level calibration
- > Easy-to-read weather forecasting icons
- > Thermometer with temperature measurement from -10°C to +60°C
- > Stopwatch and count down timer with range of 99:59:59
- > Tour memory mode: record time of 360 minutes (6 hours) based on a 5 second sampling interval
- > Clock, calendar & alarm
- > HiGlo backlight
- > Key lock function
- > Water resistant up to 30 meters





# RMW 128

- > Auto-synchronizing clock by radio signal DCF-77
- > Display of time and calendar
- > Alarm with snooze function
- > Zone time
- > Stopwatch
- > Countdown timer
- > EL Backlight
- > Low battery indication
- > Water resistant up to 50 metres
- > Not available in the UK



## THE RADIO CONTROLLED SIGNAL

- > In the UK a radio signal is emitted from a radio station in Rugby. The station emits under a callsign MSF. Under normal conditions this time signal is received in the UK at the frequency of 60 kHz within a range of 1200km. In Germany a radio station in Meinflingen near Frankfurt emits under the callsign DCF-77 a time signal with a frequency of 77.5 kHz. This can be received within a range of at least 1500 Km. Both time signals are driven by a Cesium based atomic clock that varies less than one millionth of a second per year.

# EB 833

- > Hand held altimeter & barometer
- > Measures and displays the altitude
- > Min/max altitude level
- > Programmable alarm for maximum altitude
- > Barometric pressure graph displays the change in weather for the previous 12 hours
- > Weather forecast illustrated with symbols
- > Clock with alarm & calendar
- > Water-resistant
- > Not available in the UK



Colore non disponibile per il mercato Italiano



# EB 312

- > Hand held barometer
- > Weather forecasting via easy-to-read weather icons (eg. Sunny, Cloudy, Raining etc)
- > Storm alarm
- > Min/max temperature memory
- > Clock with alarm & calendar
- > Water-resistant
- > HiGlo backlight







## GP 801 SPEED & DISTANCE GPS

### Multifunctional watch with GPS based Speed & Distance Measurement

- > Accurate distance, speed & pace measurement via arm-mounted Garmin GPS receiver
- > Current speed/pace, average speed/pace, highest speed/pace in 1/10 kph or mph resolution
- > 50 lap memory in number, time, distance and average lap speed/pace
- > Odometer up to 10,000 km (after 50 laps memory)
- > Stopwatch and count down timer with range 99:59:59
- > Clock, calendar & alarm
- > Zone Time
- > Automatic timing setting by GPS receiver
- > HiGlo™ EL backlight
- > Water resistant up to 50 meter / GPS receiver splash proof
- > Storage pouch included





## SL 928 M

- > 3 line digital display
- > 500 lap counter stopwatch with 99 lap segment
- > 23:59:59 timer
- > Count up and count down timers
- > Count repeat
- > Pacer beep
- > Ergonomic design
- > Clock with alarm and calendar
- > Water resistant to 10metres



## C 510

- > 1 line digital display
- > Count up and count down timers
- > Count repeat
- > Pacer beep
- > Ergonomic design
- > Clock with alarm and calendar
- > Water resistant to 10 metres
- > Available only in yellow in the UK



## SL 928 D

- > 2 line digital display
- > 100 lap counter stopwatch with 30 lap segments
- > 23:59:59 timer
- > Count up and count down timers
- > Count repeat
- > Pacer beep
- > Ergonomic design
- > Clock with alarm and calendar
- > Water resistant to 10metres





SE 132 VIBRA-TRAINER PRO

Heart Rate Monitor Watch with unique vibration alert function & 44 lap memory

- > Heart rate monitor via wireless chest belt (splash proof)
- > Vibration heart rate limit alert
- > Stopwatch range of 99:59:59 with 44 lap memory
- > SMART Training Programme
- > Average heart rate reading
- > Automatic or manual programmable Hi/Lo heart rate limits
- > Measures calories burned (real time calories and % fat burn)
- > Fitness Index
- > Clock, calendar & alarm
- > Count down timer
- > Hi-Glo backlight
- > User selectable measurement units
- > Water resistant up to 50 meters
- > Storage pouch included



SMART Training Program

Based on your own personal fitness profile & selectable heart rate limits, the SMART training program is able to monitor your hearts activity during exercise – keeping you within that all important “zone” to maximise the benefits of your workout. It will also tell you calories burnt as well as % fat burn.

The SMART training program alerts you if you go above or below this zone via audible beeps as well a unique vibration function.

Train the SMART way and see results faster.

Fitness Index

To access the full benefits of heart rate monitor watches and the SMART training program, set up your own personal user profile. Based on gender, age, weight, height and fitness level (range from 0 – 2) a Fitness Index (range from 13 – 53) is automatically calculated , and allows you to track your progress over time. The higher the index, the fitter you are.

SE 121 VIBRA-TRAINER

Heart Rate Monitor Watch with unique vibration alert function

- > Heart rate monitor via wireless chest belt (splash proof)
- > Vibration heart rate limit alert
- > Stopwatch range of 99:59:59
- > SMART Training Programme
- > Average heart rate reading
- > Automatic or manual programmable Hi/Lo heart rate limits
- > Measures calories burned (real time calories and % fat burn)
- > Fitness Index
- > Clock, calendar & alarm
- > Count down timer
- > Hi-Glo backlight
- > User selectable measurement units
- > Water resistant up to 50 meters
- > Storage pouch included





HR 318 PRO TRAINER

- > Heart rate monitor with Smart Trainer program
- > Stopwatch with 44 lap memory
- > Average heart rate reading
- > Measures calories burned
- > Automatic or manually programmable hi/lo heart rate training zone
- > Automatic or manually programmable hi/lo heart rate alert when out of training zone
- > Wireless chestband
- > Clock with alarm and calendar
- > Count up timer
- > HiGlo backlight
- > Water resistant to 30m

Not available in the UK



HR 102

- > Heart rate monitor
- > Manually programmable hi/lo heart rate training zone
- > Manually programmable hi/lo heart rate alert when out of training zone
- > Wireless chestband
- > Clock with alarm and calendar
- > Stopwatch with count up timer
- > HiGlo backlight
- > Water resistant to 30m

Not available in the UK



Belt also sold separately.  
Compatible with HR102, HR308,  
HR318, AT108, ATP108 &  
ATC108

HR 308 SMART TRAINER

- > Heart rate monitor with Smart Trainer program
- > Average heart rate reading
- > Measures calories burned
- > Automatic or manually programmable hi/lo heart rate training zone
- > Automatic or manually programmable hi/lo heart rate alert when out of training zone
- > Wireless chestband
- > Clock with alarm and calendar
- > Stopwatch with count up timer
- > HiGlo backlight
- > Water resistant to 30m



PM 138

- > Pulse rate monitor watch
- > HiGlo backlight
- > Monitors the pulse rate using a sensor
- > Clock in 12- and 24-hour format
- > Count down/up timer 59 minutes and 59 seconds
- > Watch face detaches from strap for use as a stopwatch
- > Available only in silver in the UK (not shown)

Not available in the UK









PE 316 CA

- > Movement sensitive step counter with sensitivity adjustment
- > Calorie counter
- > Total distance travelled (miles)
- > User set stride length for accurate readings
- > Clock
- > Built in belt clip
- > HiGlo backlight



PE 319

- > Movement sensitive step counter with sensitivity adjustment
- > Panic alarm
- > Calorie counter with weight setting for calorie calculation
- > Count up timer
- > Total distance travelled (miles)
- > User set stride length for accurate readings
- > Clock
- > Built in belt clip
- > HiGlo backlight



PE 316 PM

- > Movement sensitive step counter with sensitivity adjustment
- > Finger pulse meter
- > Calorie counter
- > Count up timer
- > Total distance travelled (miles)
- > User set stride length for accurate readings
- > Clock
- > Built in belt clip
- > HiGlo backlight



PE 316 FM

- > Movement sensitive step counter with sensitivity adjustment
- > FM radio with in-the-ear headphones (included)
- > Count up timer
- > Total distance travelled (miles)
- > User set stride length for accurate readings
- > Clock
- > Built in belt clip
- > HiGlo backlight







## WA 101

- > Movement sensitive step counter with sensitivity adjustment
- > Jumbo digit LCD display
- > Built in belt clip







Body Weight Scales  
Blood Pressure Meters

# HEALTHCARE COLLECTION





## GA 101

- > Body Analyser Scales
- > Body Weight
- > Body Fat Index (BFI) calculation
- > Body Mass Index (BMI) calculation
- > 4 User profiles + 1 guest
- > 150kg max weight capacity
- > 100g accuracy
- > User selectable units of measurement
- > Low battery indicator
- > Splash proof



Most of us are concerned only about our weight. However, knowing weight alone is not enough, what is important is whether you are the right weight for your height (BMI) and % body fat (BFI). These, together with weight, give you a better picture of your overall fitness & health.

### Body Fat Index (BFI)

Body Fat Index is calculated by measuring the time it takes for an electrical current to pass through your body in conjunction with such factors as your age, gender, height and weight.

### Body Mass Index (BMI)

Lots of factors may influence how much people weigh. One of the key factors however is height. Taller people are expected to weigh more than shorter people simply because they are taller. The body mass index is a method of expressing body weight taking into account the height differences.



## BWR 102

- > Highly accurate strain gauge weighing scales with wireless remote monitor
- > Body mass index reading (BMI)
- > Automatic step on activation
- > Select read out in lbs, st-lbs or kgs for both the scale and the remote monitor
- > 4 user memories storing up to 7 records each, including BMI
- > 150kg weighing capacity
- > Clock with calendar



## BWR 101

- > Highly accurate strain gauge weighing scales with wireless remote monitor
- > Automatic step on activation
- > Select read out in lbs, st-lbs or kgs for both the scale and the remote monitor
- > 4 user memories storing up to 7 records each
- > 150kg weighing capacity
- > Clock with calendar



## BW 101

- > Highly accurate strain gauge weighing scales
- > Automatic step-on activation
- > Select read out in lbs, st-lbs or kgs
- > 150kg weighing capacity
- > Not available in the UK





# ST 228

- > Salt meter
- > Measures salt concentration and temperature of liquid
- Salinity range 0.3% - 2.0%
- > 7 level bars indicate salt concentration
- > Temperature measuring range 0 - 90°C
- > Accurate to 1°C
- > Automatic switch off - °C / °F selectable
- > Includes protective cover
- > Low battery indicator
- > Not available in the UK



# PMP 238 N

- > Pill box with two compartments
- > 29:59:59 countdown timer
- > Start/stop button for timer
- > HiGlo backlight
- > Clock
- > NB: UK version does not feature the finger pulse monitor







## BPW 221

- > MDD approved wrist mounted blood pressure meter
- > Easy-touch measurement with automatic pressure release valve using Fuzzy logic system
- > Reliable oscillometric technology
- > Reading of Systolic and Diastolic pressure (30/280 mmHg)
- > Reading of Mean Arterial Pressure (30/280 mmHg)
- > Reading of mean blood pressure pulse rate (30/200 pulse/mm)
- > Suitable for 2 independent users storing up to 60 records for each user profile
- > Automatic power-off after 1 minute
- > Easy-to-read extra large display
- > Storage container included & usable as an armrest when taking a reading
- > Secure soft-touch Velcro strap
- > Clock & Calendar



## BPW 211

- > MDD approved wrist mounted blood pressure meter
- > Easy-touch measurement with automatic pressure release valve using Fuzzy logic system
- > Reliable oscillometric technology
- > Reading of Systolic and Diastolic pressure (30/280 mmHg)
- > Reading of Mean Arterial Pressure (30/280 mmHg)
- > Reading of mean blood pressure pulse rate (30/200 pulse/mm)
- > 60 memory records
- > Automatic power-off after 1 minute
- > Easy-to-read extra large display
- > Storage container included usable as an armrest
- > Secure soft-touch Velcro strap
- > Clock & Calendar



## BPW 128

- > MDD approved wrist mounted blood pressure meter
- > Easy-touch measurement with automatic pressure release valve using Fuzzy logic system
- > Reliable oscillometric technology
- > Reading of Systolic and Diastolic pressure (30/280 mmHg)
- > Reading of Mean Arterial Pressure (30/280 mmHg)
- > Reading of mean blood pressure pulse rate (30/200 pulse/mm)
- > 30 memory records
- > Automatic power-off after 1 minute
- > Easy-to-read extra large display
- > Storage container included usable as an armrest
- > Secure soft-touch Velcro strap
- > Clock & Calendar







Digital Cameras  
Digital Voice Recorders  
Databanks

DAILY & PROFESSIONAL COLLECTION



## DS 9300

- > 3.3 Mega pixels
- > Up to 6 Mega pixel output
- > CCD sensor
- > 1.5" TFT colour preview screen
- > 2 x Optical zoom
- > 2 x Digital zoom
- > 8Mb internal memory
- > SD/MM card compatible
- > Flash
- > Movie mode
- > Macro
- > Self timer
- > Video out for TV connection
- > USB Plug & Play interface
- > Compatible with Windows & Mac
- > Photo editing software included



## DS 8238

- > 2.0 Mega pixels
- > Up to 3.0 Mega pixel output
- > CMOS sensor
- > 1.5" TFT colour preview screen
- > 2 x digital zoom
- > 8Mb internal memory
- > SD/MM card compatible
- > Flash
- > Movie (with audio)
- > Audio recording
- > Macro
- > Self timer
- > Video out for TV connection
- > USB interface
- > Compatible with Windows & Mac
- > Photo editing software included



## DS 8228

- > 2.1 Mega pixels
- > CCD sensor
- > 1.4" TFT colour preview screen
- > 2 x Digital zoom
- > 8Mb internal memory
- > CF card compatible
- > Flash (including red-eye)
- > Movie mode
- > Macro
- > Self timer
- > Video out for TV connection
- > USB interface
- > Compatible with Windows & Mac
- > Photo editing software included



## DS 8118

- > 1.3 Mega pixels
- > Up to 2 Mega pixel output
- > CMOS sensor
- > 1.4" colour preview screen
- > 2 x digital zoom
- > 8Mb internal memory
- > SD/MM card compatible
- > Flash
- > Movie (with audio)
- > Audio recording
- > Macro
- > Self timer
- > Video out for TV connection
- > USB interface
- > Compatible with Windows & Mac
- > Photo editing software included



## DS 6888

- > 1.3 Mega pixels
- > CMOS sensor
- > 8Mb internal memory
- > Smart Media card compatible
- > Flash
- > Movie mode
- > Macro
- > Self timer
- > Video out for TV connection
- > USB interface
- > Compatible with Windows & Mac
- > Photo editing software included





## DS 6638

- > 2.0 Mega pixels
- > Up to 3.0 Mega Pixel output
- > CMOS sensor
- > 1.5" TFT colour preview screen
- > 2 x digital zoom
- > 8Mb internal memory
- > SD/MM card compatible
- > Flash
- > Movie mode
- > Self timer
- > Video out for TV connection
- > Metal casing
- > USB interface
- > Compatible with Windows & Mac
- > Photo editing software included





**DS 6618**

- > World's thinnest digital camera - only 6mm
- > VGA resolution
- > CMOS sensor
- > Autobrite® technology compensation
- > 8Mb internal memory stores up to 101 images
- > Internal lithium-ion rechargeable battery
- > Metal casing
- > USB interface
- > Compatible with Windows & Mac
- > Photo editing software included



**DS 6628**

- > World's thinnest 1.3 Mega pixel digital camera - only 8mm
- > 1.3 Mega pixels
- > CMOS sensor
- > Autobrite® technology compensation
- > 16Mb internal memory
- > Internal lithium-ion rechargeable battery
- > Metal casing
- > SD/MM card compatible
- > Detachable flash module
- > Macro
- > USB interface
- > Compatible with Windows & Mac
- > Photo editing software included
- > Available in silver/grey





**DS 3898**

- > VGA/QVGA resolution
- > 8Mb internal memory
- > 26 shots at hi res (640x480)
- > 107 shots at lo res (320x240)
- > Movie mode
- > Self timer
- > Web-cam
- > Video out for TV connection
- > USB interface
- > Compatible with Windows
- > Photo editing software included



**DS 3888 V-C@M**

- > VGA/QVGA resolution
- > 8Mb internal memory
- > 26 shots at hi res (640x480)
- > 107 shots at lo res (320x240)
- > Detachable flash & audio recording module
- > 13 mins audio recording function
- > Movie mode
- > Self timer
- > Web-cam
- > Video out for TV connection
- > USB interface
- > Compatible with Windows & Mac
- > Photo editing software included



**DS 3886**

- > VGA/QVGA resolution
- > 8Mb internal memory
- > 26 shots at hi res (640x480)
- > 107 shots at lo res (320x240)
- > Movie mode
- > Self timer
- > Web-cam
- > Video out for TV connection
- > USB interface
- > Compatible with Windows & Mac
- > Photo editing software included



**DS 3899 Y-C@M**

- > VGA/QVGA resolution
- > 8Mb internal memory
- > 26 shots at hi res (640x480)
- > 107 shots at lo res (320x240)
- > Movie mode
- > Self timer
- > Web-cam
- > Video out for TV connection
- > USB interface
- > Compatible with Windows & Mac
- > Photo editing software included







## VR 636

- > World's thinnest Digital Voice Recorder - only 6mm
- > Up to 265 min recording time
- > 32 MB internal memory
- > Stores up to 99 messages in each of 2 folders
- > Built in rechargeable battery (up to 6 hours continuous playback)
- > USB PC link
- > Voice activated recording with adjustable volume (VOX)
- > Message scroll device
- > Section repeat
- > Index marking & date/time stamp
- > Automatic switch off
- > External Mic input





VR 399

- > Up to 234 minutes recording time
- > 8MB internal memory
- > Stores up to 99 messages in each of 4 folders
- > Variable speed playback
- > USB PC link
- > Voice activated recording with adjustable volume (VOX)
- > Message scroll device allows the user to search for any stored message
- > Section repeat
- > Index marking and date/time stamp
- > Automatic switch off
- > Alarm
- > External Mic input



VR 393

- > Up to 90 minutes recording time
- > 16MB internal memory
- > Stores up to 99 messages in each of 2 folders
- > Voice activated recording with adjustable volume (VOX)
- > Message scroll device allows the user to search for any stored message
- > Section repeat
- > Index marking and date/time stamp
- > Automatic switch off
- > Alarm
- > External Mic input



VR 368

- > Digital voice recorder
- > Up to 200 minutes recording time
- > Stores up to 99 messages
- > Voice activated recording with automatic volume adjustment (VOX)
- > Message scroll device
- > Automatic switch off
- > External MIC input



VR 383

- > Red beam laser pointer with up to 10 metres visual reflection
- > Up to 136 minutes recording time
- > 16MB internal memory
- > Stores up to 99 messages in each of 2 folders
- > Variable speed recording
- > Voice activated recording with adjustable volume (VOX)
- > Gain control (High, Low, Auto)
- > Message scroll device allows the user to search for any stored message
- > Section repeat
- > Index marking and date/time stamp
- > Alarm
- > External Mic input & output



VR 268

- > Digital voice recorder
- > Recording time: 32 minutes
- > Stores up to 99 messages in each of 2 folders
- > Search for any individual stored message
- > Erases one or several messages
- > Input for external microphone
- > Adjustable recording volume
- > Automatic switch off
- > Not available in the UK



PDA 298 1 MB

- > Digital touch screen organiser
- > 1MB Flash memory
- > Handwriting recognition
- > PC link with docking station (included)
- > Synchronises with most popular PIM software packages (e.g. Outlook)
- > Information back up device (sold separately)
- > PC synchronisation software (included)
- > Functions include: instant memo & sketching, data protection, phone book, to do list, expense manager, currency converter, local/international clock, alarm
- > English only
- > Touch screen display



PDA 293 1MB

- > Digital touch screen organiser
- > 1Mb Flash memory
- > PC link with docking station (included)
- > PC synchronisation software (included)
- > Synchronises with most popular PIM software packages (e.g. Outlook)
- > Information back up device (sold separately)
- > Functions include: 3 separate phone books, schedule, calendar, currency/metric converter, calculator, local/international clock, alarm
- > English only
- > Touch screen display

PDA 283 256 KB

- > 256kB to store more than 3000 addresses
- > Touch Screen Display with data entry by means of stylus pen
- > PC connection (optional)
- > 7 Language Translator (English, French, German, Italian, Spanish, Portuguese, Dutch), with approx. 9500 words per language
- > Functions include: Diary, World time, Calculator, Alarm, Metric and currency converter
- > Not available in the UK



PDA 188

- > Digital touch screen organiser
- > 256kb Flash memory
- > PC link with RS232 serial interface (included)
- > Synchronises with most popular PIM software packages (e.g. Outlook)
- > Includes Easy Sync & Companion Link software
- > Functions include: contacts and to do lists, memo, schedule, calendar, euro converter, calculator, local/international clock, alarm
- > 3 language options: English, French, Spanish
- > Touch screen display







DECT Phones  
2-way Radios / PMRs

# COMMUNICATION & LIFE COLLECTION



# WEATHER DECT WD 338

## Weather DECT Telephone

- > Barometer with easy-to-read weather forecasting symbols (e.g. cloudy, sunny)
- > Indoor / Outdoor Temperature & Humidity readings from up to 3 remote wireless sensors (1 sensor included)
- > Date & Time
- > Alarm Clock with two separate crescendo alarms & 8 minute snooze
- > 10 caller ID memories
- > 50 memory phonebook
- > 10 level last number redial
- > Multiple handset capability
- > Call transfer & Call Waiting
- > Baby monitoring
- > Intercom
- > 3-way conferencing & Speaker Phone
- > Out of range alert
- > 5 selectable ring tones & volume levels



"We love to talk about the weather"  
Introducing a phone, a barometer and an alarm clock all-in one



# WD 338 HSC

## Extra Handset for the WD338

- > Additional handset with charger for WD 338
- > The WD338 can support up to 4 additional handsets
- > Same phone functionality as per the above model
- > Weather features work only in combination with WD 338



## Why buy a DECT Phone?

- > Crystal Clear Sound – No more hissing, crackling or bad reception
- > Up to 300 Meters Range – use your phone outside in the garden or any room within a 300 meter radius of the base unit
- > Caller Display – see the name or the number of the caller before you answer
- > Multi-Handset Packs – have phones in different rooms all from just the one telephone socket so no more running around to answer that call and no extra wiring required
- > Increased Talktime – DECT phones use less power which means increased talktime and standby times over analogue cordless phones

# THERMO DECT TD 339

## Indoor & Outdoor Temperature Telephone DECT

- > Indoor & Outdoor Temperature
- > Date & Time
- > Clock Alarm
- > 10 caller ID memories
- > 50 memory phonebook
- > 10 level last number redial
- > Multiple handset capability – up to 4 handsets
- > Call transfer
- > Baby monitoring
- > Intercom
- > 3-way conferencing
- > Speaker Phone
- > Out or range alert
- > Call Waiting
- > 5 selectable ring tones & volume levels

Not available in the UK



## TD 339 HSC

### Extra handset for the TD339 or TD338

- > Same phone functionality as per the above model
- > Indoor and/or Outdoor Temperature only in combination with TD-338 & TD-339



# THERMO DECT TD 338

## Thermo DECT TD338

- > Indoor Temperature DECT Telephone
- > Date & Time
- > Alarm Clock
- > 10 caller ID memories
- > 50 memory phonebook
- > 10 level last number redial
- > Multiple handset capability – up to 4 handsets
- > Call transfer
- > Baby monitoring
- > Intercom
- > 3-way conferencing
- > Speaker Phone
- > Out or range alert
- > Call Waiting
- > 5 selectable ring tones & volume levels
- > Includes 2 games – Snake & Car Racing





## TP 329

- > 304 channels (8 PMR channels with 38 CTCSS)
- > Up to 5km talk range
- > Backlit LCD
- > VOX for easy hands-free conversation
- > 500mW Output Power
- > Memory retention function
- > Key lock, key tone & Roger beep functions
- > Power save function
- > Battery status indicator
- > Volume control
- > Durable rubberised finish for easy-grip
- > Up to 22 hours battery life
- > Available in a range of colours



## TP 329C

- Charger for TP 329



## TP 329 MULTIPACK

- > Twin Pack Basic
- > Twin Pack with Charger
- > Quad Pack with Charger
- > Six Pack with Charger

